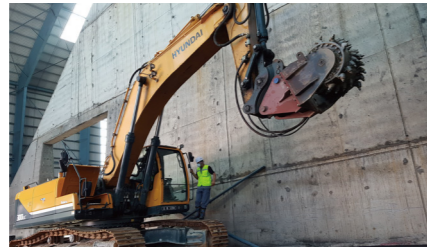


## COMPACT ROCK GRINDER



Technical Data	Unit	SRG03
Recommended rotation speed	rpm	150
Recommended oil flow	l/min	32
Maximum oil flow at 10 bar	l/min	60
Maximum operating oil pressure	bar	350
Torque at 210 bar	Nm	720
Torque at 350 bar	Nm	1,200
Cutting force at 210 bar	N	6,450
Cutting force at 350 bar	N	10,700



**SUNJIN**  
CONSTRUCTION EQUIPMENT

### CONTACT

**SUNJIN**  
CONSTRUCTION EQUIPMENT

HOMEPAGE. [www.sunjince.com](http://www.sunjince.com)  
 E-MAIL. [sales@sunjince.com](mailto:sales@sunjince.com)  
 PHONE. +82-10-4997-7970  
 FAX. +82-2-2637-0504

## Features

- **Robust** - long lasting low maintenance
- **Reliable** - sput gear transmission technology
- **Strong** - maximum cutting power to penetrate the rock

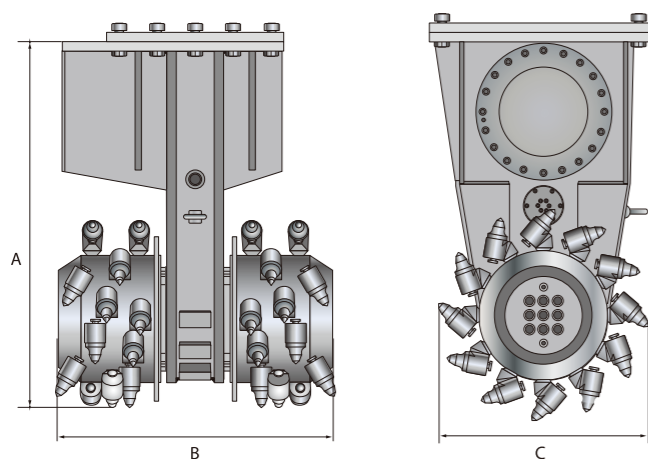


## Benefits

- Extremely accurate scaling / grinding / profiling
- Lower vibrations reduce fatigue
- Direct reuse material as backfill
- Quiet operation in noise sensitive area
- Underwater operation

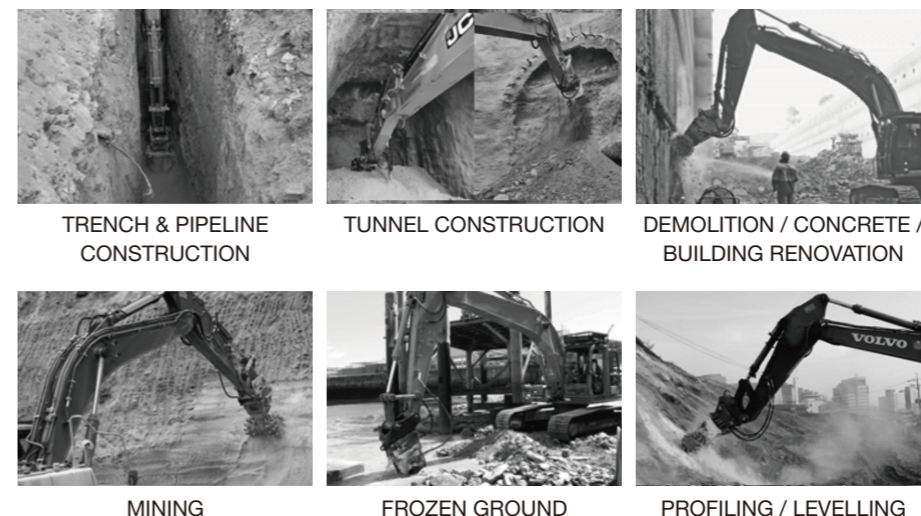


## TWIN HEAD ROCK GRINDER



TYPE	RG05	RG10	RG15	RG20	RG30	RG50
Carreir weightg class (t)	5 - 8	8 - 12	12 - 18	18 - 25	25 - 40	40 - 60
Service weight (kg)	310	470	820	1,000	1,700	2,600
Total Length (mm) A	805	965	1,130	1,200	1,420	1,580
Total width of cutting head (mm)B	480	680	780	800	1,000	1,240
Diameter of cutter drum(mm) C	225	450	575	575	670	680
Rated Power (kW)	30	45	65	80	120	160
Oil flow rate (l/min)	49-90	75-124	109-170	140-250	190-320	275-410
Operating pressure (bar)	max, 350 bar					
Ratatoinal speed (rpm)	90-160	80-135	60-90	60-110	45-85	55-85
Pick Speed (m/s)	1.5-2.7	1.7-2.8	1.8-2.7	1.8-3.3	1.6-2.7	2.0-2.9
Max.cutting force at 350bar (kN)	17,800	23,200.0	36,200	50,400	69,900	81,800
Max. Torque at 350 bar (Nm)	3,150	5,200	10,400	14,000	23,400	27,800
Max. rock hardness (MPa)	25	40	50	60	80	100
Number of picks (Pcs)	56	64	44	48	48	56
Pick shank diameter (mm)	20	20	25	25	30	30

## JOB APPLICATIONS



UNDERWATER OPERATION

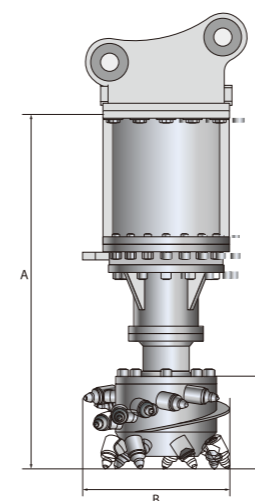
TREE STUMP REMOVAL

UNDERGROUND CONSTRUCTION

TRENCH & PIPELINE CONSTRUCTION

MAKING ROAD ACCESS

## SINGLE HEAD ROCK GRINDER



TYPE	RGL20	RGL30	RGL40
Carreir weightg class (t)	15 - 23	20 - 30	25-35
Service weight (kg)	820	1,200	1,200
Total Length (mm) A	1,100	1,900	1,900
Total width of cutting head (mm)B	360	500	500
Diameter of cutter drum(mm) C	450	600	600
Rated Power (kW)	80	120	120
Oil flow rate (l/min)	140-250	190-320	190-320
Operating pressure (bar)	max, 350 bar		
Ratatoinal speed (rpm)	60-110	60-110	45-85
Pick Speed (m/s)	1.8-3.3	2.1-3.6	1.6-2.7
Max.cutting force at 350bar (kN)	49,500	51,300	68,800
Max. Torque at 350 bar (Nm)	14,000	17,500	23,400
Max. rock hardness (MPa)	60	70	80
Number of picks (Pcs)	25	35	35
Pick shank diameter (mm)	30	30	30